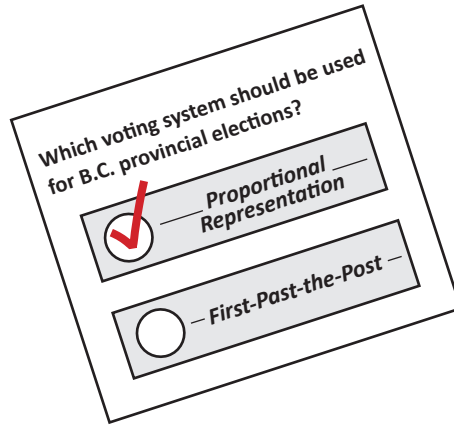
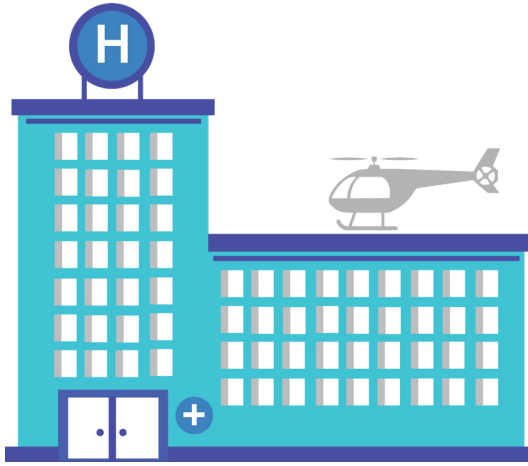
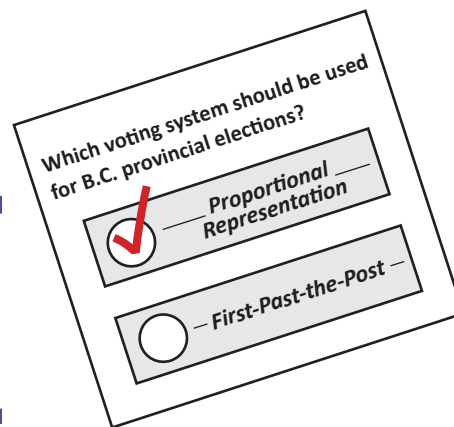
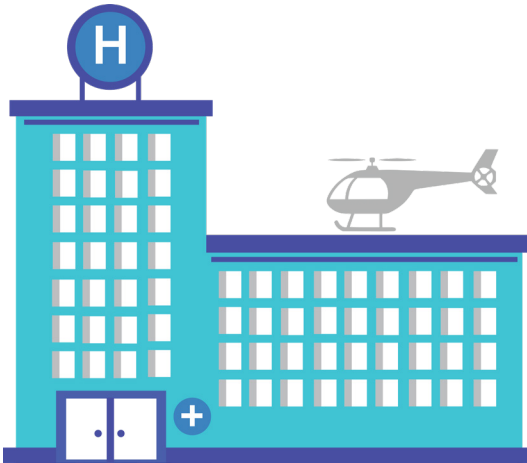


POLICIES THAT BENEFIT EVERYONE



Research shows that health care and other social programs are better funded under governments elected by proportional representation than those elected by first-past-the-post.*

POLICIES THAT BENEFIT EVERYONE



Research shows that health care and other social programs are better funded under governments elected by proportional representation than those elected by first-past-the-post.*

I SUPPORT PRO REP!

Proportional representation ensures that election results are proportional to votes cast, delivering fairer results. Democracies with proportional representation have, on average, 7.5 percentage points higher voter turnout, 8 percentage point greater representation of women in legislatures, and spend 4.5 percentage points more on social programs, including health care.* Proportional representation makes sense for BC.

I pledge to vote in support of proportional representation in the 2018 BC referendum, taking place from Oct. 22 to Nov. 30 via mail-in ballot.

(PLEASE PRINT)

NAME:

EMAIL:

PHONE:

WORKSITE:

*Lijphart, Arend (2012). *Patterns of Democracy. Government Forms and Performance in 36 Countries*. New Haven, CT: Yale Press.

I SUPPORT PRO REP!

Proportional representation ensures that election results are proportional to votes cast, delivering fairer results. Democracies with proportional representation have, on average, 7.5 percentage points higher voter turnout, 8 percentage point greater representation of women in legislatures, and spend 4.5 percentage points more on social programs, including health care.* Proportional representation makes sense for BC.

I pledge to vote in support of proportional representation in the 2018 BC referendum, taking place from Oct. 22 to Nov. 30 via mail-in ballot.

(PLEASE PRINT)

NAME:

EMAIL:

PHONE:

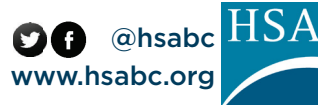
WORKSITE:

*Lijphart, Arend (2012). *Patterns of Democracy. Government Forms and Performance in 36 Countries*. New Haven, CT: Yale Press.

THIS CARD WAS DISTRIBUTED BY:
(please print full name)

If you would like to order more
pledge cards, contact
sponting@hsabc.org.

Please return pledge card
bundles to: Health Sciences
Association c/o Sam Ponting
180 East Columbia Street,
New Westminster, BC
V3L 0G7



THIS CARD WAS DISTRIBUTED BY:
(please print full name)

If you would like to order more
pledge cards, contact
sponting@hsabc.org.

Please return pledge card
bundles to: Health Sciences
Association c/o Sam Ponting
180 East Columbia Street,
New Westminster, BC
V3L 0G7

